



Vembu NetworkBackup

File Backup, Microsoft Exchange, SQL Server, SharePoint, System State, Outlook and MySQL Backup

VEMBU TECHNOLOGIES PARTNERS



About Vembu Technologies



Founded in 2002



HQ in Chennai, India



4000+ Channel Partners



Reached more than 60,000 businesses



70 % of our customers are from North America, 20% from Europe and the rest 10% from APAC

Vembu BDR suite is an one stop solution to all your backup and DR needs catering to every requirement of small and midsize businesses.



VMBackup

Backup & Replication for VMware and Hyper-V



Image Backup

Backup and Bare-metal recovery for Physical Windows Servers & Desktops



NetworkBackup

Backup solution for file/folders, applications like MS Exchange, SQL, SharePoint, AD, Outlook and MySQL etc.,



OnlineBackup

Backup solution for file/folders, applications like MS Exchange, SQL, SharePoint, AD, Outlook and etc. directly to Vembu Cloud



SaaSBackup

Backup Solution for SaaS Applications like Office 365 and Google Apps

- **Vembu OffsiteDR** is an add-on service to Vembu BDR Backup Server. OffsiteDR enables you to keep additional copy of backup data on-site or off-site
- **Vembu CloudDR** provides ability to set up hybrid cloud environment where you can replicate additional backup copy to Vembu Cloud. So you can keep one copy of your backup data in the Vembu BDR backup server in your data center and another copy in the Vembu Cloud
- **Vembu BDR360** helps you with 24/7 availability by providing the flexibility to monitor and manage all your Vembu BDR backup environments from a centralized portal
- **Vembu Universal Explorer** is an agent-less software which helps you to restore individual items from Microsoft Exchange, SQL Server, SharePoint and Active Directory instantly. This tool can be used for Instant Granular Recovery from Vembu BDR managed backups.

Why Vembu NetworkBackup?



Not every small & medium business are using image level backups for their data center. They look for a simple granular level backup solution to backup important files/folders and some selected applications instead of backing up entire machine including OS and other data.

Vembu NetworkBackup ensures you the best backup and recovery solutions for your valuable business data, such as important files/folder, Microsoft Exchange, Microsoft SQL Server, Microsoft Active Directory, Microsoft SharePoint, Outlook and MySQL.

Backup Challenges

Normally, IT Administrators worry about following factors while selecting a backup solution:

- Exponential data growth
- Need for faster data restore
- Frequent data protection
- Less monitoring

VembuHIVE File System

VembuHIVE™ is an efficient cloud file system designed for large-scale backup and disaster recovery application with support for advanced use-cases. VembuHIVE™ can be defined as a Filesystem for File Systems.

- In-built version control
- In-built Deduplication & Encryption
- In-built error correction



Instant Granular Restore

- Restore selected files/folders to same or different location instantly
- Restore Exchange Store, Mail boxes or Emails instantly
- Restore SQL databases or tables
- Restore SharePoint sites or documents
- Restore your Outlook data
- Restore System State meta information to same or different machine

Near CDP

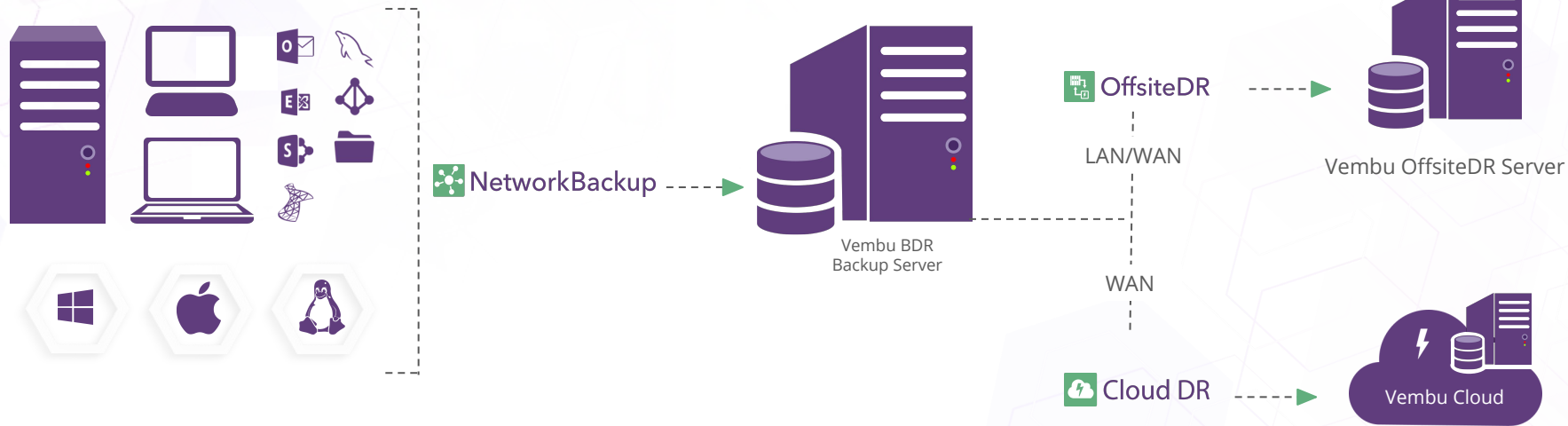
- Vembu offers near continuous data protection (CDP) for all types of backups
- Supports continuous file/folder level backups ensuring that the modifications are immediately backed up to the storage repositories
- Supports near continuous backup schedules for other applications such as Exchange, SQL, SharePoint and etc

Monitoring & Reporting

- Automates the backup process by scheduling from the window provided, later the incrementals will run forever without any manual scheduling
- Configure backup window settings, if you don't want to run incrementals during non working hours and weekends
- Bandwidth Throttling feature enables the user to limit the bandwidth used by the backup process from the client machine. If you don't want to spend your entire bandwidth on backups, use this feature to control or limit the bandwidth
- Additionally you can specify the maximum number of full backups that need to be stored in the server
- You will be notified via emails, when a backup completes successfully or fails

Architecture

Architecture



Vembu BDR Backup Server



- Backup Server can be installed on Windows and Ubuntu OSs
- It can be installed on Physical or Virtual machines
- Virtual Appliance package is available for VMware vSphere & Microsoft Hyper-V environment
- Handles backup from both Vembu VMBackup and Vembu NetworkBackup agents
- Users can send copy of backup data to your co-location (Vembu OffsiteDR) or Vembu Cloud (Vembu CloudDR) - Optional
- Manage Storage Repositories
- Perform Disaster Recoveries

Storage Repositories

- Works with SAN, NAS and DAS
- Encrypts & Compress the backed up data
- Easily scale up when storage increase
- Since Vembu uses its own file system (VembuHIVE™), you can use various file systems in the same repository for Vembu Backup Server
- Backed up data stored in the form of multiple chunk files to improve the disk & application performance

Vembu NetworkBackup Client (proxy)



- This client is used to backup selected files/folders and applications such as MS Exchange, SQL, SharePoint, AD , Outlook, etc.,
- Supports backing up files from network shares
- This client agent needs to be installed on machines having files and applications
- Backup selected files/folders or applications and applies compression, encryption before sending the data to Vembu Backup Server
- Agent can be installed on Windows, Linux and Mac based physical or virtual machines

- Vembu Cloud Servers are running on highly secured Amazon Web Services across all continents
- The servers will be automatically scaled while receiving huge loads
- The servers are running in clustered environment to avoid backup interruptions
- Vembu Cloud Servers accepts backup data directly from Vembu OnlineBackup clients and Vembu BDR Backup Servers as well
- From centralized Vembu Customer Portal, you can manage and monitor all your backup jobs

- If customers are interested in keeping a copy of their backup data in a secured cloud environment, they can send it to Vembu Cloud from Vembu BDR Server
- Vembu CloudDR servers are running in Vembu Cloud and handles backup requests from Vembu BDR Backup Server
- You can restore the backed up data from Vembu Cloud anytime and anywhere
- Backup data will be instantly synced to Vembu CloudDR server once stored in primary repository
- Archiving older data in Vembu Cloud comparatively involves low costs

- Instantly transfer backup data from Vembu BDR Backup Server to the Vembu OffsiteDR server
- Allows you to set up Disaster Recovery server in your data center
- Accepts backup data from multiple Vembu BDR Backup Servers
- Rebuild Vembu BDR Backup Server from secondary storage repositories
- Offer DRaaS by running the backed up images in your cloud during disaster
- Vembu OffsiteDR Server can be installed on Windows and Linux based Virtual or Physical machines
- Virtual appliances available for VMware vSphere and Microsoft Hyper-V

- Every customer has to sign up for Vembu Portal account to activate their Vembu BDR Suite of products after trial period
- Purchase and Renew licenses
- Manage purchased licenses
- Track all your purchase and billing information
- Activate Vembu BDR Backup Server and Vembu OffsiteDR Server after trial period with Vembu Portal account

System Requirements

Vembu BDR Backup Server



- Supported Operating Systems
 - Microsoft Windows Server 2012 R2 (64-bit)
 - Microsoft Windows Server 2012 (64-bit)
 - Microsoft Windows Server 2008 R2 (64-bit)
 - Ubuntu 12.04 LTS (64-bit)
 - Ubuntu 14.04 LTS (64-bit)
- Minimum Requirements for Backup server
 - Memory: 8 GB or higher
 - Processor: Quad-Core or higher
 - Architecture: x64-bit
- Recommended Specifications for Backup server
 - Memory: 16 GB or higher
 - Processor: Quad-Core or higher
 - Architecture: x64-bit

- Supported Applications for Backup
 - Microsoft Exchange Server 2013, 2010, 2007
 - Microsoft Exchange Server DAG 2013, 2010
 - SQL Server 2012, 2008, 2005
 - Microsoft SharePoint Server 2013, 2010, 2007, 2003
 - MySQL 5.0 and later ○ Microsoft Outlook 2013, 2010, 2007
- Supported Desktops / Laptops for Backup
 - Windows 8, 7, XP, Vista
 - Mac OS X 10.5 and later for Intel PC's

Vembu NetworkBackup Client (Cont...)

- Supported Servers for Backup
 - Windows Server 2012 R2, 2012
 - Windows Server 2008 R2, 2008 SP2 and later
 - Windows Server 2003 SP2 and later
 - Windows SBS 2011, 2008, 2003
 - RedHat Enterprise Linux 5 and later
 - Debian Linux 5.0 and later
 - CentOS 5.2 and later
 - CloudLinux 5.10 and later
 - Fedora11 and later
 - Ubuntu 10.04 and later
 - Gentoo

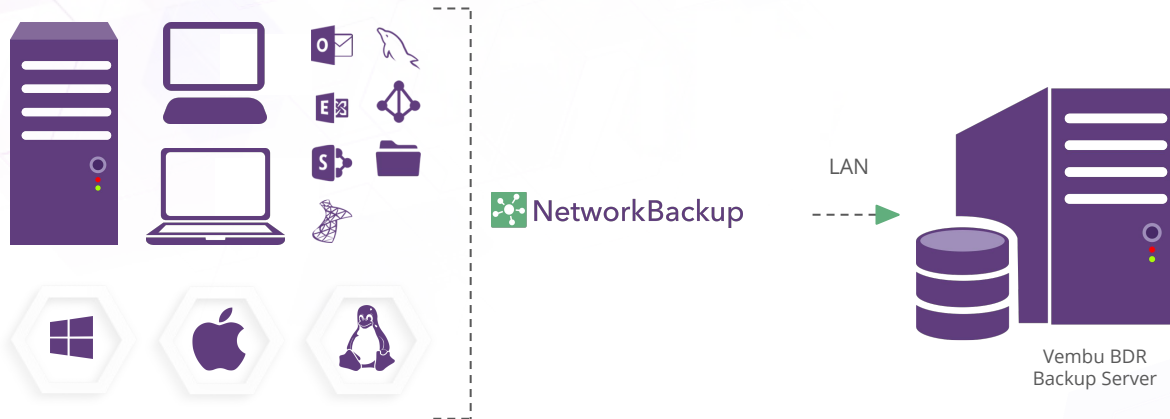
- Supported Operating Systems
 - Microsoft Windows Server 2012 R2 (64-bit)
 - Microsoft Windows Server 2012 (64-bit)
 - Microsoft Windows Server 2008 R2 (64-bit)
 - Ubuntu 12.04 LTS (64-bit)
 - Ubuntu 14.04 LTS (64-bit)
- Minimum Requirements for OffsiteDR Server
 - Memory: 8 GB or higher
 - Processor: Quad-Core or higher
 - Architecture: x64-bit
- Recommended Specifications for OffsiteDR Server
 - Memory: 16 GB or higher
 - Processor: Quad-Core or higher
 - Architecture: x64-bit

Deployment

Physical or Virtual ?

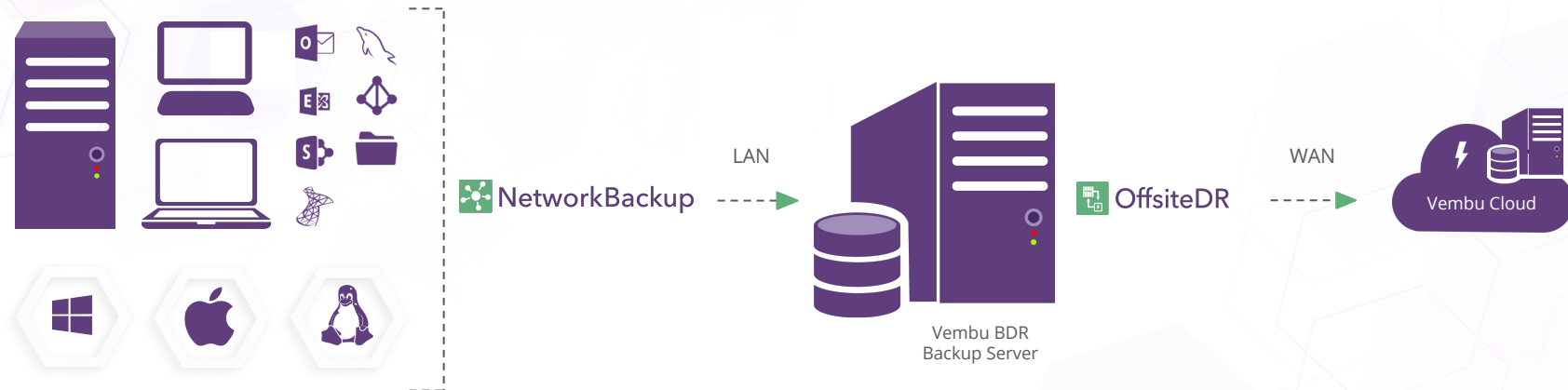
- Vembu BDR Backup Server, OffsiteDR Server, NetworkBackup Client and OnlineBackup Clients can be installed on physical or virtual machines
- It depends on the size of the environment
- Small business may use virtual machine for Vembu BDR backup server and OffsiteDR server
- Recommending physical machine for Vembu BDR backup server and OffsiteDR server to get instant boot feature

On-premises Deployment



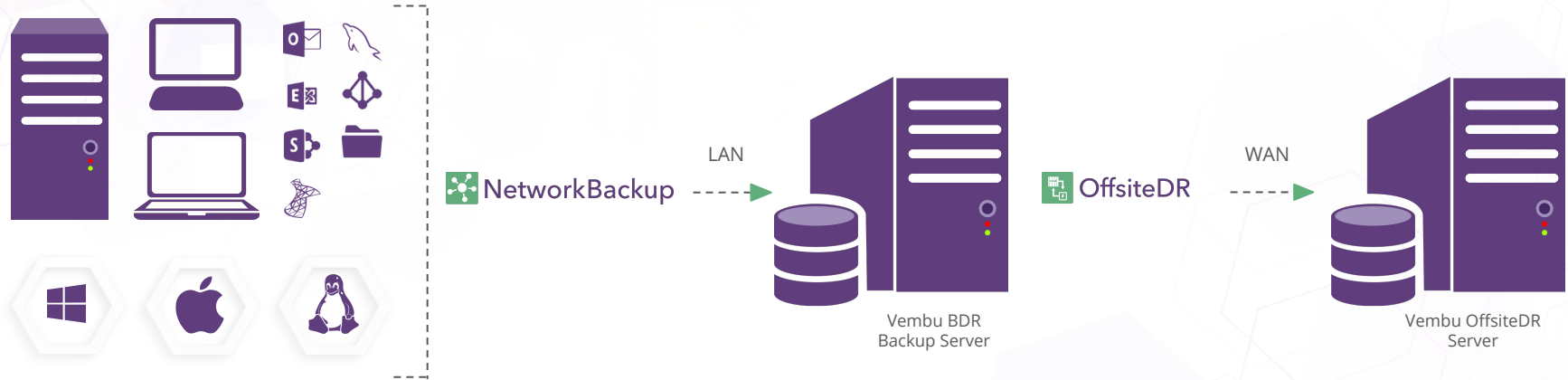
- Setup DR site in your local environment and Backup via LAN connections
- Backup VMs, Physical Machines and applications to the local storage repositories

Hybrid Deployment - Scenario 1



Setup DR site in your local environment and backup via LAN connections and send another copy of backup data to Vembu Cloud via WAN connection by signing up to Vembu CloudDR service

Hybrid Deployment - Scenario 2

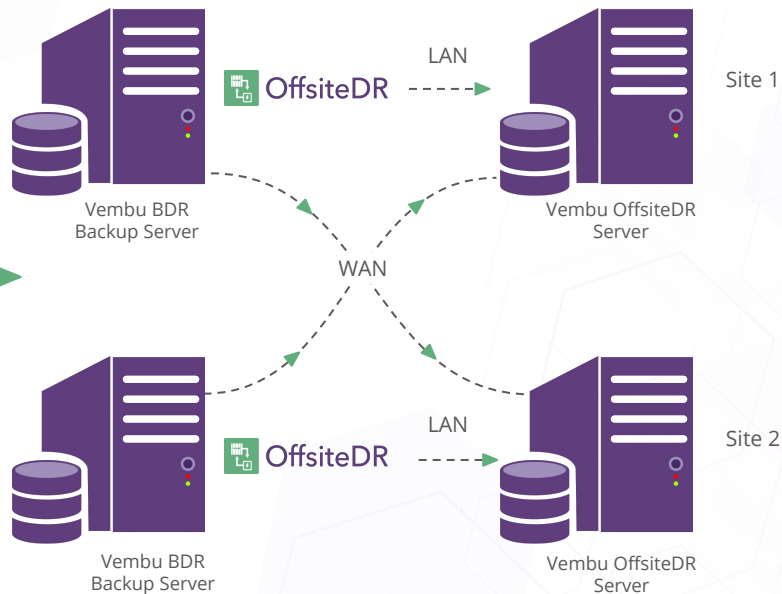


Setup DR site in your local environment and backup via LAN connections and send another copy of backup data to Vembu Cloud via WAN connection by signing up to Vembu CloudDR service

Remote office/Branch office

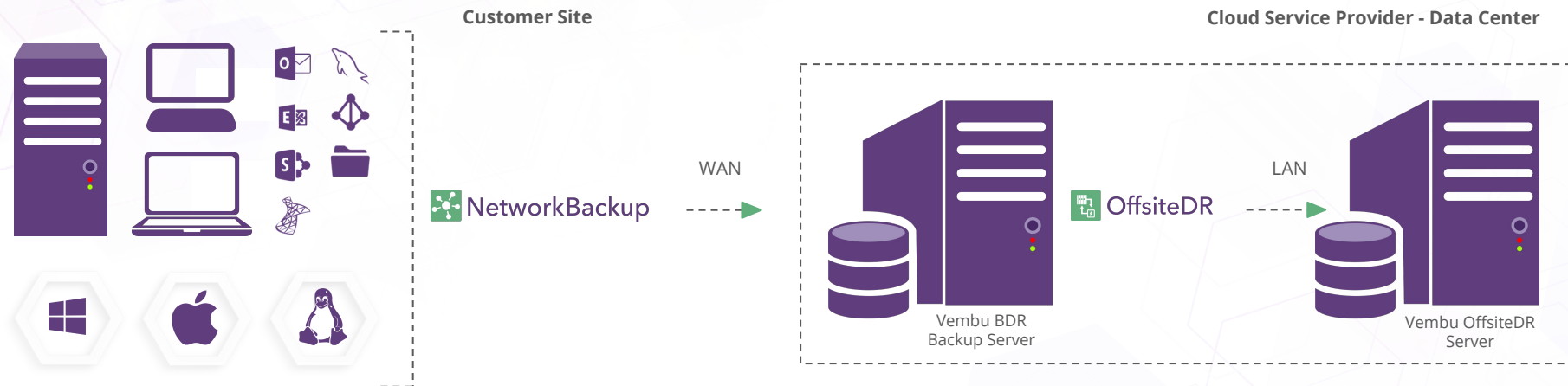


 NetworkBackup



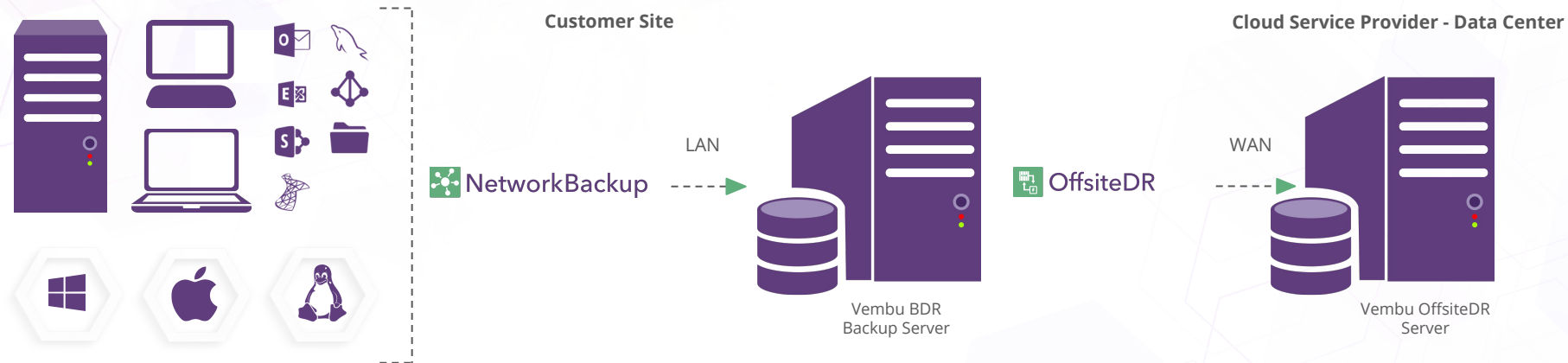
Setup Vembu BDR Backup Server and Vembu OffsiteDR Server in both Remote office and Branch office and sync backup data between both the locations

Offsite (or) Remote Deployment (CSP) - 1



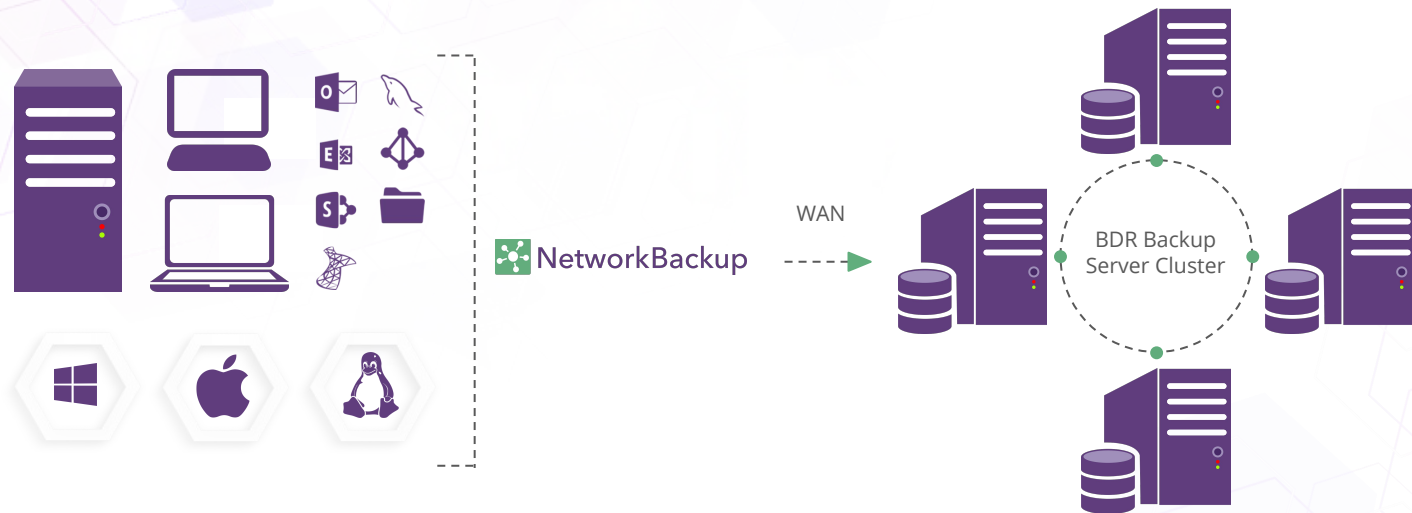
Cloud Service Providers can host Vembu BDR Server on their data center and backup another copy of data from Vembu BDR Backup Servers to the Vembu OffsiteDR server

Offsite (or) Remote Deployment (CSP) - 2



Cloud Service Providers can host Vembu BDR Server on the customer site and backup another copy of data from Vembu BDR Backup Servers to their data center over WAN

Backup Server Clustering



- You can easily scale up the backup server when backup load increases
- Backup requests will be equally shared between each backup servers

How it Works

Granular Backup Types

- File backup
- Microsoft Exchange Server Backup
- Microsoft Exchange Server Mailbox Backup
- Microsoft SQL Database Backup
- Microsoft SharePoint Site Level Backup
- Microsoft Outlook Backup
- MySQL Database Backup
- System State Backup

File Backup & Restore

File & Folder level backup is the top feature of Vembu NetworkBackup,

- Supports all kind of documents, images, videos, graphics, slides, sheets, etc
- Backup files & folders from network shares
- Restore to the original location or to a different location or machine

Key options to enable or disable,

- You can add or remove any files/folders (types) from the backup schedule
- Backs up NTFS permission
- Automatic Directory Monitoring
- Volume Shadow Copy Service (Windows 2003, XP, Vista, Windows 7, Windows sbs 2008 Windows 2008 and Windows 2012)

Microsoft Exchange Server Backup

Vembu NetworkBackup supports the following versions of the Exchange databases (Cluster and DAG):

- Microsoft Exchange 2007
- Microsoft Exchange 2010
- Microsoft Exchange 2013

Vembu NetworkBackup provides two ways to backup Exchange Server data:

- Microsoft Exchange Server backup
- Microsoft Exchange Mailbox backup

Microsoft Exchange Server Backup

- Uses the Microsoft VSS writer(s)
- Streaming backup data to backup server without dumping
- Database level backup
- Granular level recovery

MS Exchange Mailbox Backup

- User level / Mailbox folder level backup support
- Dump the data before start the backup using MAPI
- Dump location can be mapped drive / External HDD / USB / Local drive
- Highly recommended for users who wants to backup specific mailboxes alone

MSSQL Server Backup

Vembu NetworkBackup supports the following versions of the MSSQL Server:

- MSSQL 2005
- MSSQL 2008
- MSSQL 2012

Options available in the MS SQL Server backup:

- Database level backup
- Backup the database based on recovery model
- Use SQLVDI to backup the databases
- Transaction log support

MS SharePoint Backup

Vembu NetworkBackup supports the following versions of the MS SharePoint:

- MS SharePoint 2003
- MS SharePoint 2007
- MS SharePoint 2010
- MS SharePoint 2013

Options available in the MS Sharepoint backup:

- Site collection level backup
- Use STSADM to backup the databases
- Mapped drive / External HDD / Local HDD are supported as dump location

MySQL Backup

- Vembu NetworkBackup supports the all versions of the MySQL Server
- Database level backup
- Backup the database based on recovery model

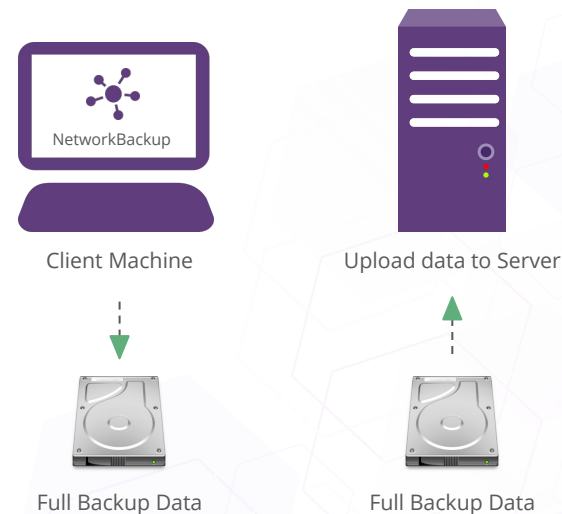
System State Backup

System State backup will backup the following components:

- System Files
- COM+ Class Registration Database
- SYSVOL
- Active Directory
- Cluster Quorum
- Certificate Services
- Registry
- Internet Information Services

Seed Backup

- In a low speed and bandwidth network it is difficult to upload large amount of full backup data to backup server. The seed backup migration will solve this problem
- Reduce time and bandwidth usage
- Seed backup migration allows you to take initial full backup in your local machine
- Later you can attach that full backup data to server through any transfer medium (HDD/External HDD/USB)



Advanced Encryption Settings



- AES Encryption algorithm will generate the Encryption key by using the user password
- Encrypting data cannot be read from the backup server where your backup has been stored
- No way to hack information while transferring the data to backup server

Bandwidth Throttling

- Limit the bandwidth of backup data transfer
- Bandwidth throttling settings will be applied to each backup schedule configured in client
- We can set time period when this settings needs to be applied



License

- Vembu charges for VMware and Hyper-V backups based on no. of CPU-Sockets
- If an ESXi host is deployed on a machine which has two CPU-Sockets, you need to buy two “VMware or Hyper-V Image Backup” licenses and backup unlimited VMs
- For Windows Physical Servers, you need to buy licenses per physical server machine
- Windows Desktops & Laptops licenses are FREE !
- For application backups, you need to buy license for each application
- The licenses need to be renewed every year
- License cost includes unlimited product upgrade, access to technical resources and 24/7 email & telephone support

Managing Licenses

- To buy licenses, you need to create an account for your company in Vembu Portal (<https://portal.vembu.com>). Vembu Portal is a centralized server which manages all of your Vembu Licenses from one place
- Once you have successfully signed up, goto “Buy” page and choose the license quantity and pay for the licenses
- Purchased licenses will be allocated to your account immediately and you can view them under “License” page
- These licenses will be automatically mapped with your existing backup jobs
- All Vembu BDR Backup Servers will communicate with Vembu Portal Server for license availability.

Pricing

Pricing

- Subscription based yearly(one, two and three year) licensing model for each applications. So you can just pay for what you use.
- License includes free updates and major product upgrades
- 24/7 Email & Telephone support
- Access to Vembu Community Forum, KnowledgeBase and other resources
- Access to centralized management portal to manage purchased licenses, download invoices and buy new licenses
- Check pricing here,
<https://www.vembu.com/vembu-bdr-suite-pricing/>



Thank You

USA & CANADA
+1-512-256-8699

UNITED KINGDOM
+44-203-793-8668

Email
vembu-sales@vembu.com
vembu-support@vembu.com

www.vembu.com