

# Vembu OffsiteDR Server Installation Guide -Windows

VEMBU TECHNOLOGIES  
[www.vembu.com](http://www.vembu.com)



## Vembu OffsiteDR Server Installation Guide - Windows

---

### Vembu OffsiteDR Server Installation Guide - Windows

Vembu OffsiteDR Server is currently supported for below versions of windows machines (Please make sure that you are using any one of the below versions).

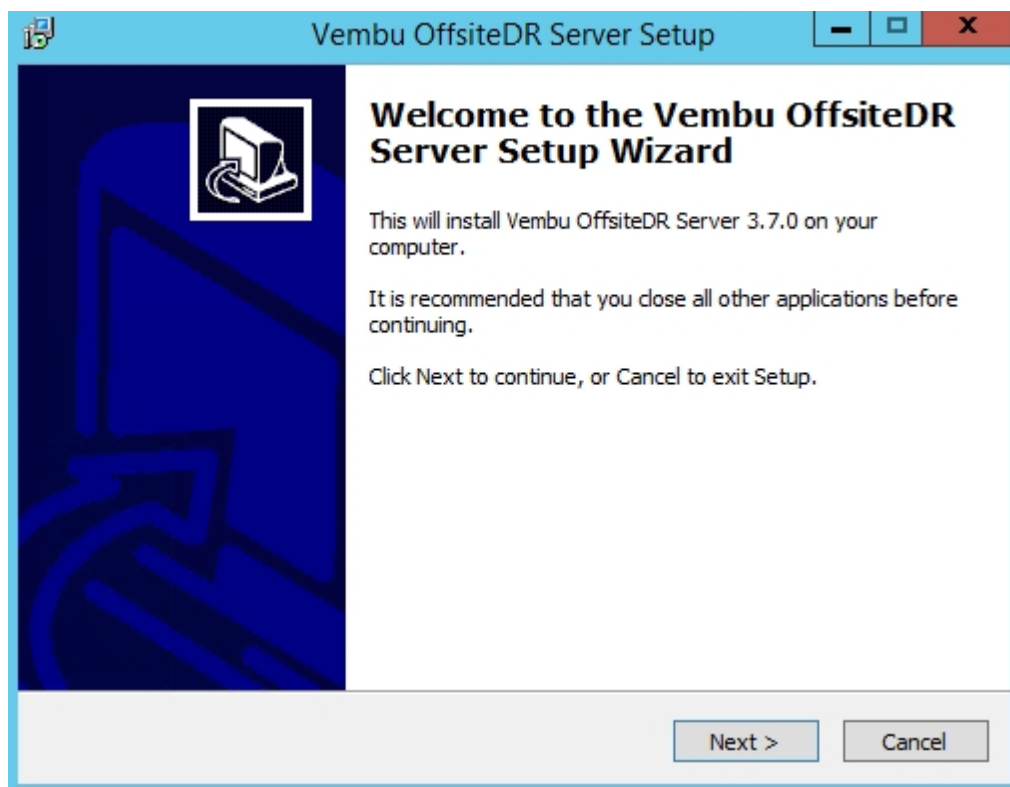
- Windows Server 2012 R2 (64 Bit)
- Windows Server 2008 R2 (64 Bit)
- Windows Server 2012
- Microsoft Windows Server 2016

#### Download Build:

- [Download](#) the OffsiteDR server online installer for Windows.

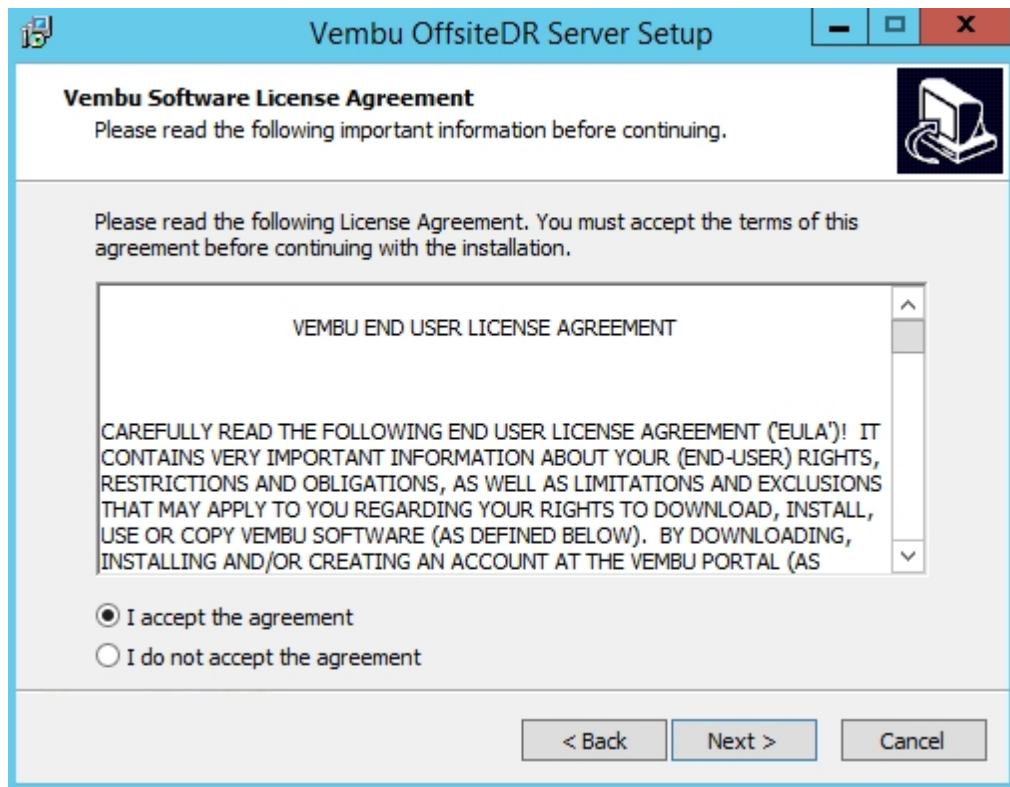
#### Steps to Installation:

- Run the downloaded installer with administrator privilege and installation process begins with the below wizard. Click Next to proceed with installing the setup.

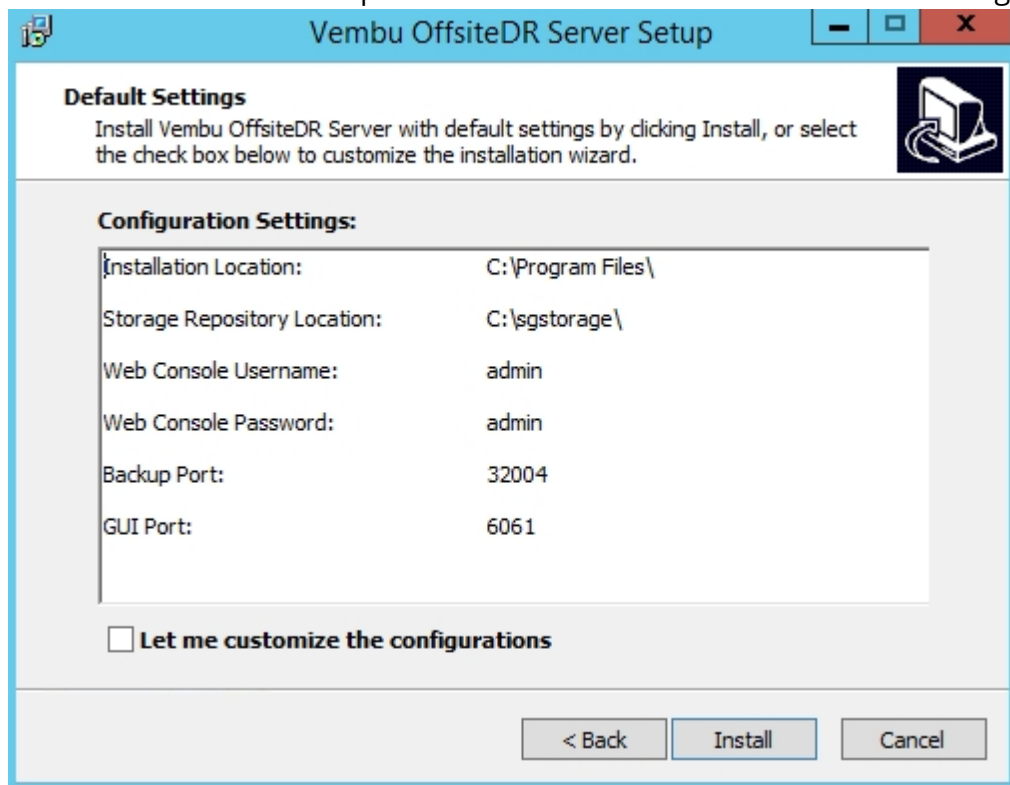


- 'Vembu OffsiteDR License agreement' is the next step in setup installation, read the agreement carefully and choose 'I accept the agreement' option.  
**Note:** Opting to 'I do not accept the agreement' will block you from proceeding with setup installation.
- Click Next

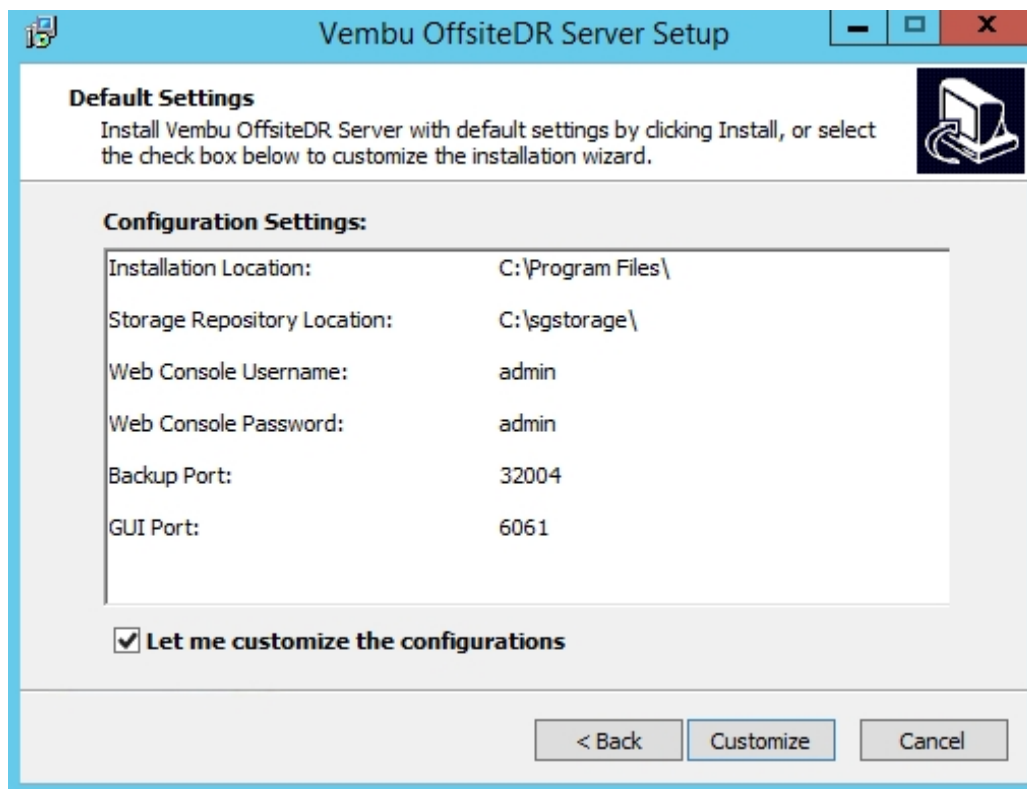




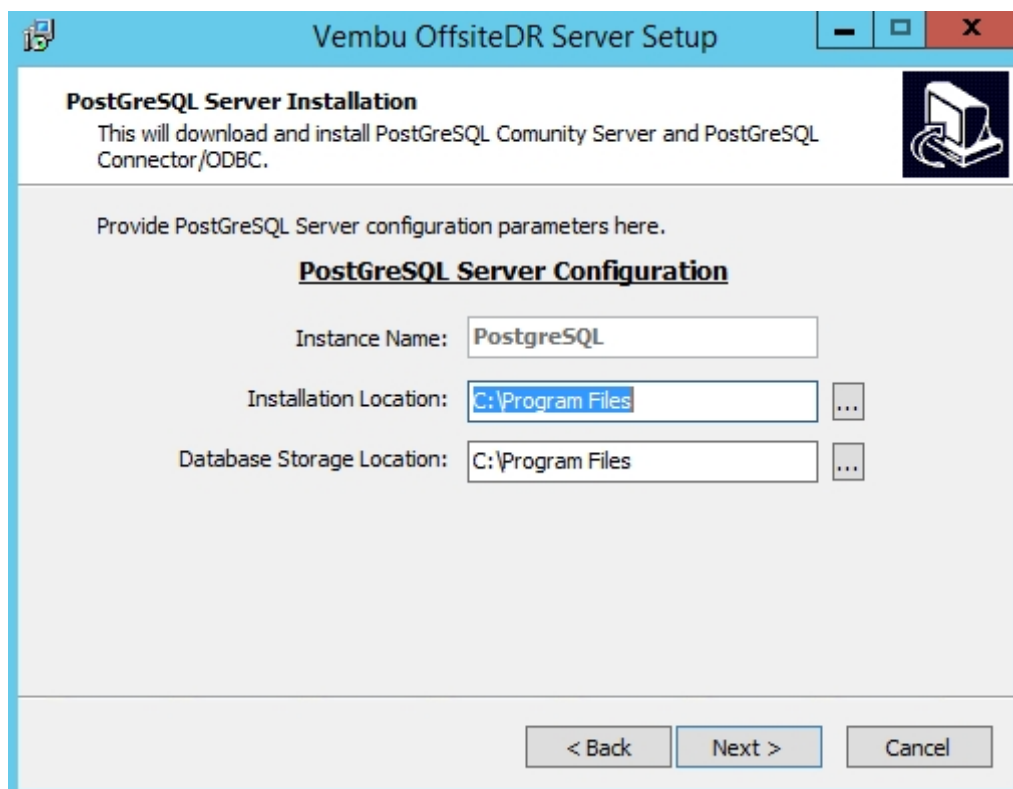
- Next step in wizard will have default settings chosen, you can either:
  - Click Install to proceed installation with default chosen settings.



- Or can check 'Let me customize the configurations' option and opt to Customize settings.

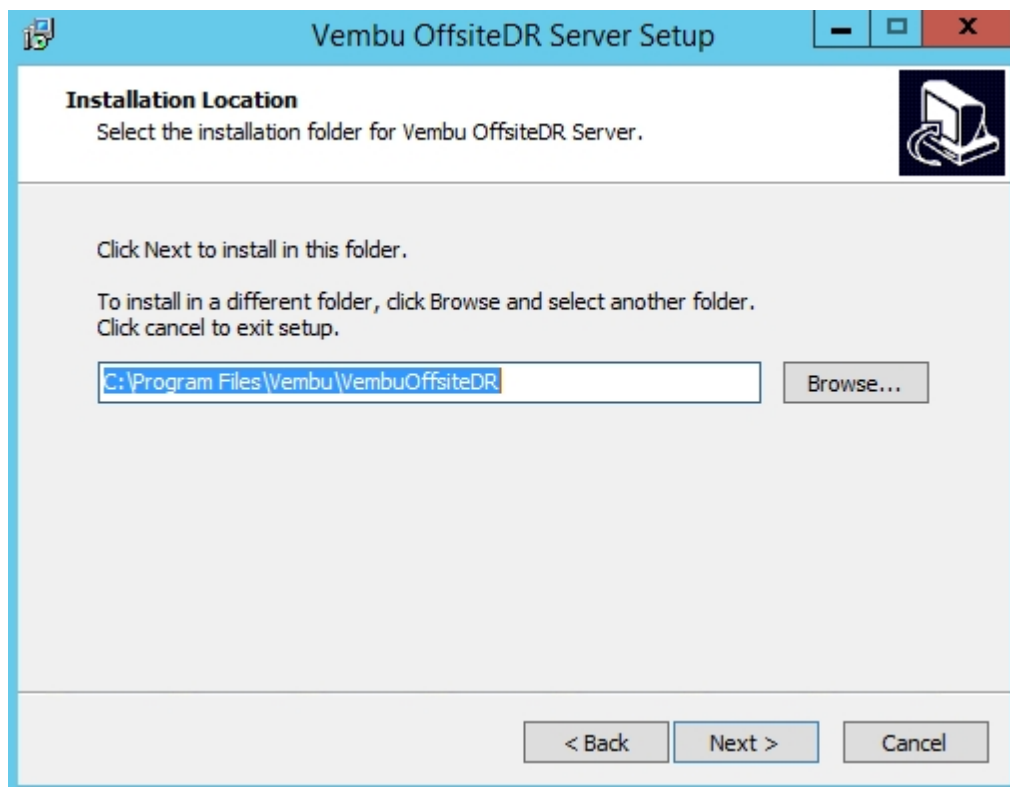


- Choosing Customize option will let you customize PostgreSQL Server Configurations in next step: 'Installation location' and 'Database Storage Location'.
- Once done choosing location, click Next.

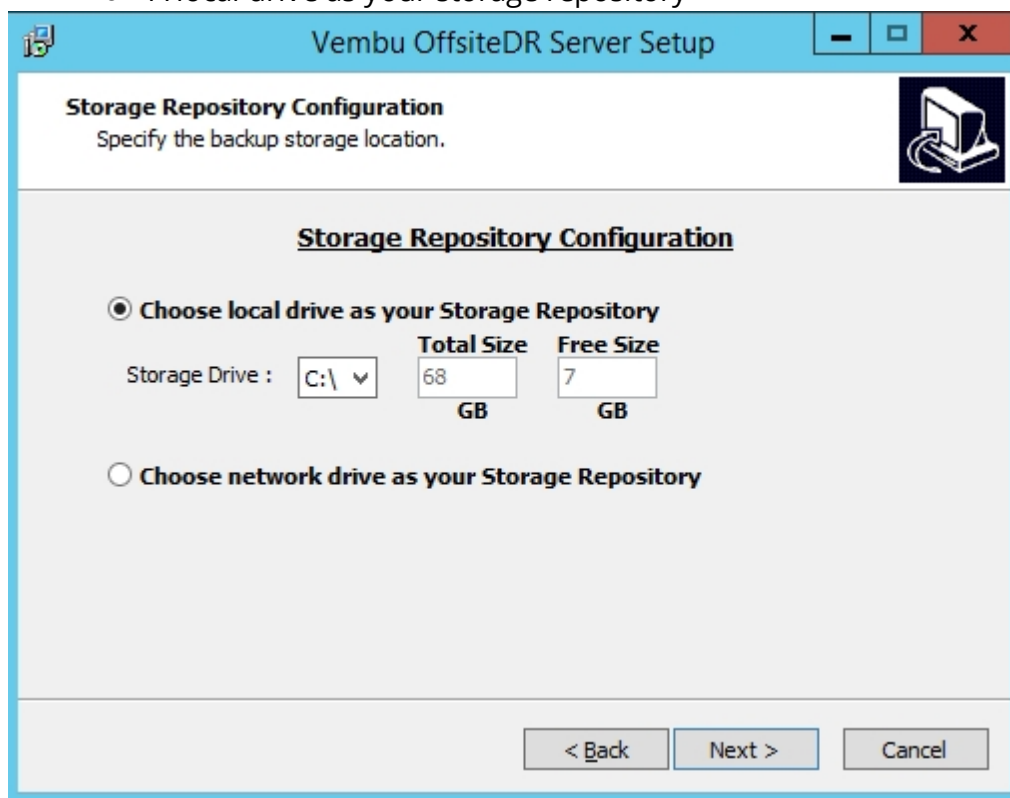


- Next step in wizard will allow you to customize installation location of Vembu OffsiteDR.

- Once done choosing location, click Next.

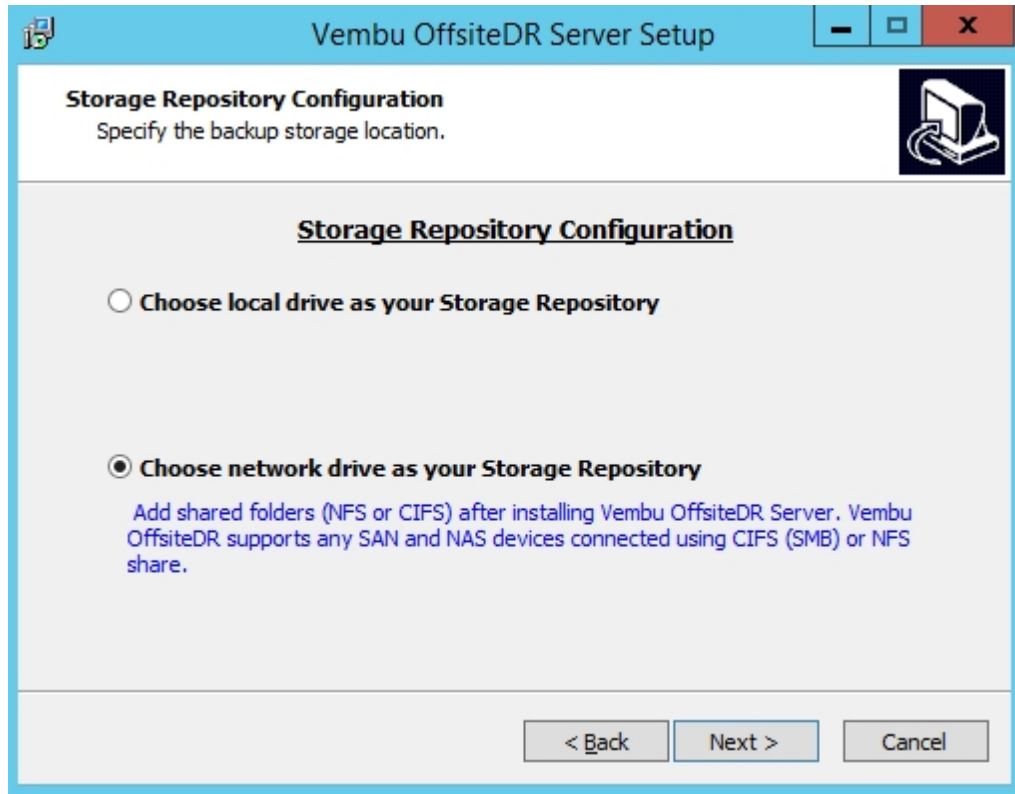


- Next step in wizard is 'Storage Repository Configuration', you can either choose:
  - A local drive as your storage repository



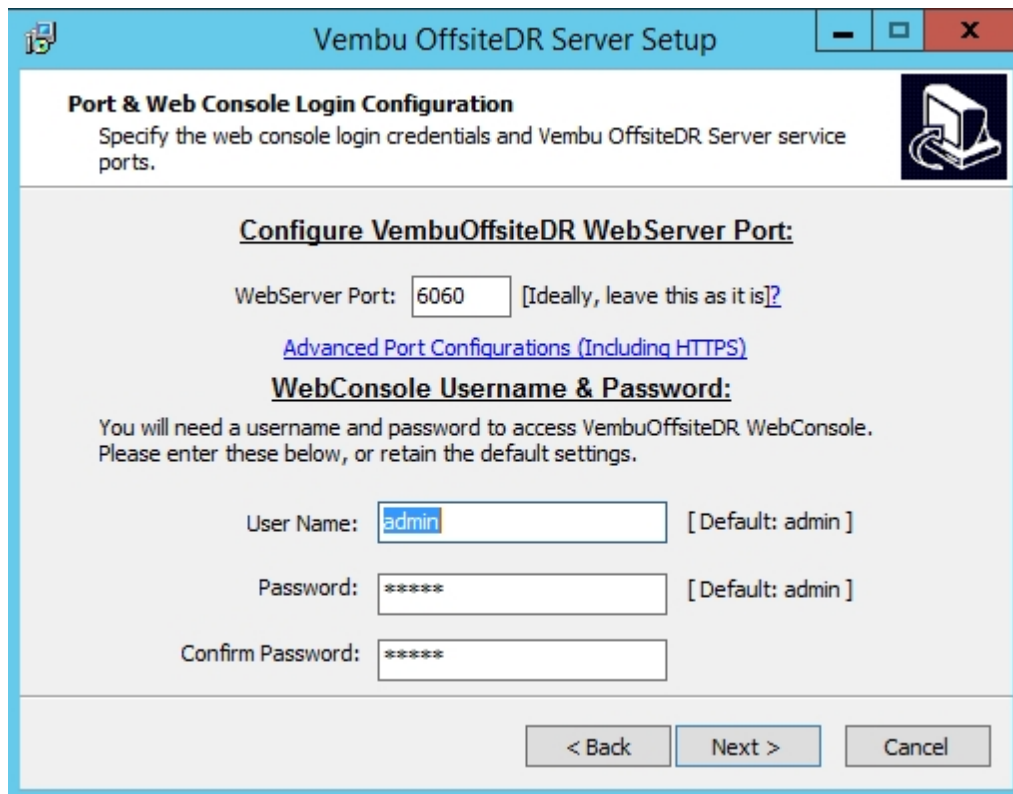
- Or choose a network drive as your storage repository

- Once done with Vembu OffsiteDR server installation, you can add shared folders as network drives by configuring them via Vembu OffsiteDR server web console.



- Click Next.
- Next step in wizard will allow you to configure:
  - User credentials for WebConsole (Default user name: admin and password: admin)
  - WebServer port (Default port chosen will be 6060 and it is recommended not to change it unless you are advanced user)
- Once done, Click Next.





**Port & Web Console Login Configuration**  
Specify the web console login credentials and Vembu OffsiteDR Server service ports.

**Configure VembuOffsiteDR WebServer Port:**

WebServer Port:  [Ideally, leave this as it is?]

[Advanced Port Configurations \(Including HTTPS\)](#)

**WebConsole Username & Password:**  
You will need a username and password to access VembuOffsiteDR WebConsole. Please enter these below, or retain the default settings.

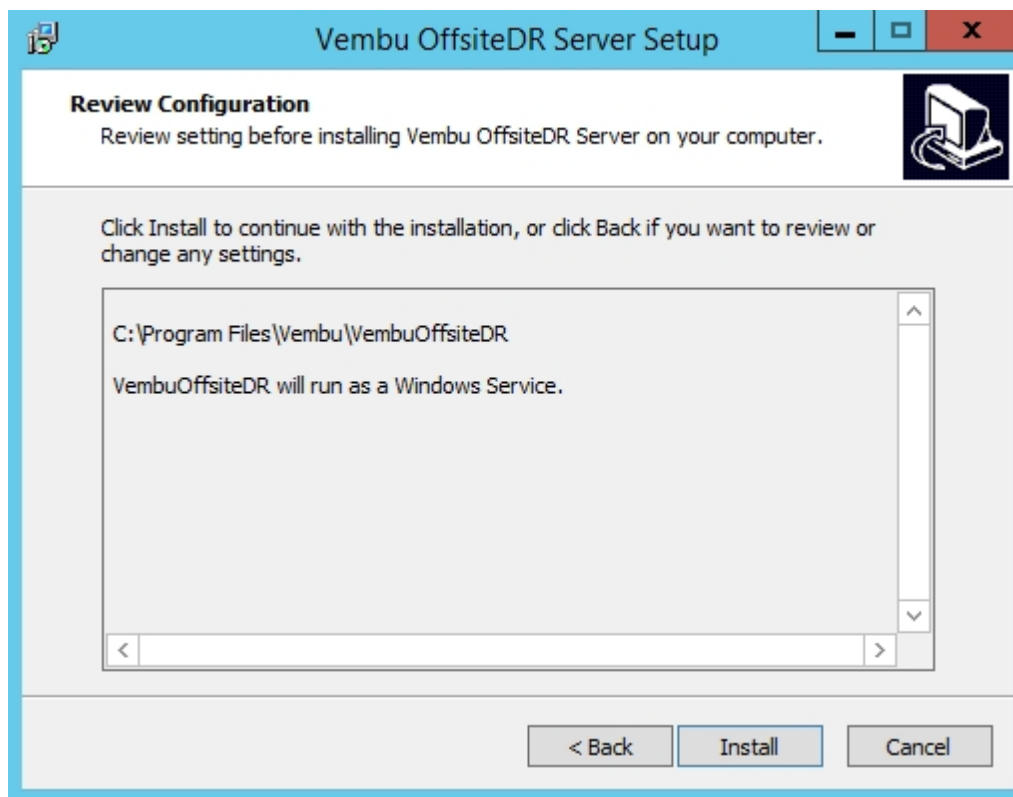
User Name:  [ Default: admin ]

Password:  [ Default: admin ]

Confirm Password:

< Back   Next >   Cancel

- Next step of Wizard will allow you to review the chosen configuration, review the settings and proceed to click Install.



**Review Configuration**  
Review setting before installing Vembu OffsiteDR Server on your computer.

Click Install to continue with the installation, or click Back if you want to review or change any settings.

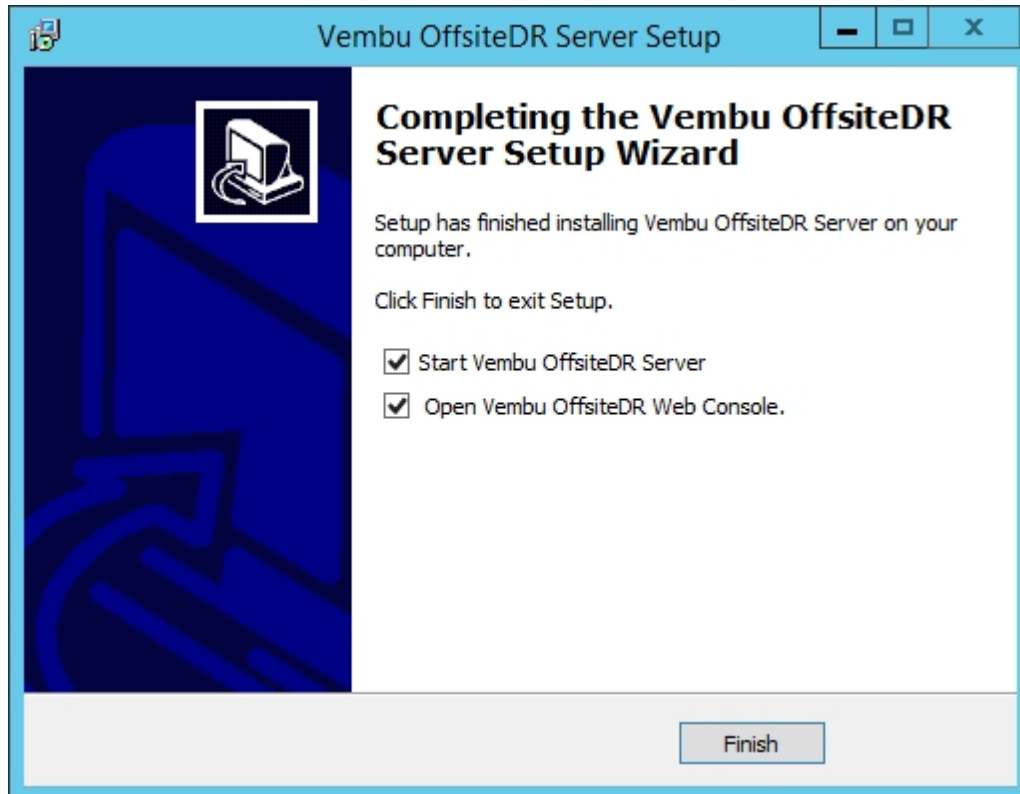
C:\Program Files\Vembu\VembuOffsiteDR

VembuOffsiteDR will run as a Windows Service.

<   Install   Cancel

- Final step of wizard after installation will ask you whether to:
  - Start Vembu OffsiteDR server and
  - Open Vembu OffsiteDR Web Console.

- You can either leave the options selected and click Finish. Or chose to UnCheck them and start later.



**Note:** VembOffsiteDR is installed as a service and can be found on Services.msc, if user chose to start later.

