

Vembu ImageBackup Installation Guide

VEMBU TECHNOLOGIES
www.vembu.com

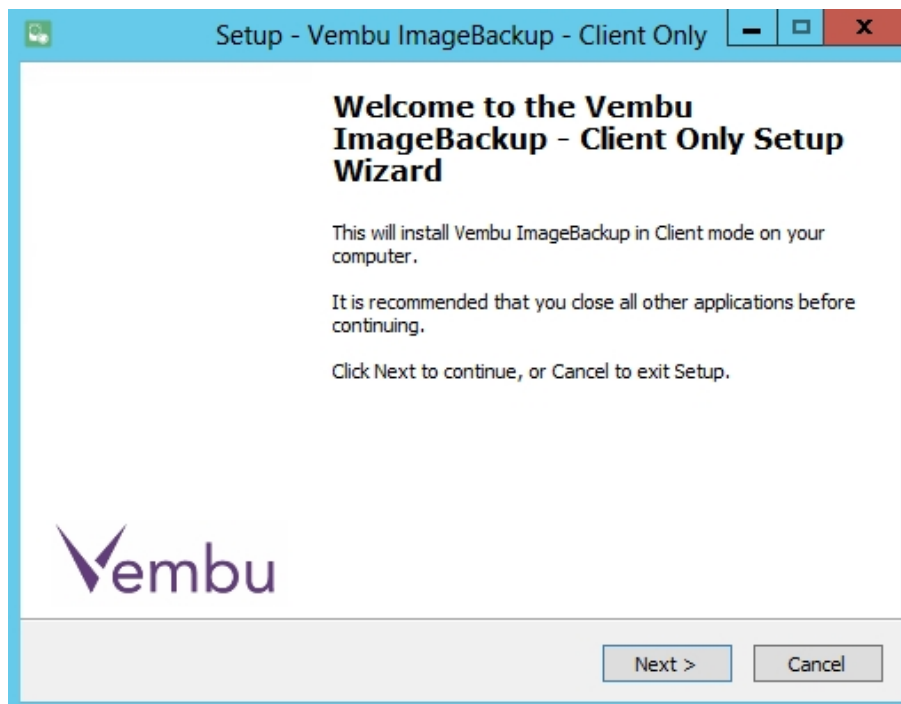


Vembu ImageBackup Installation Guide

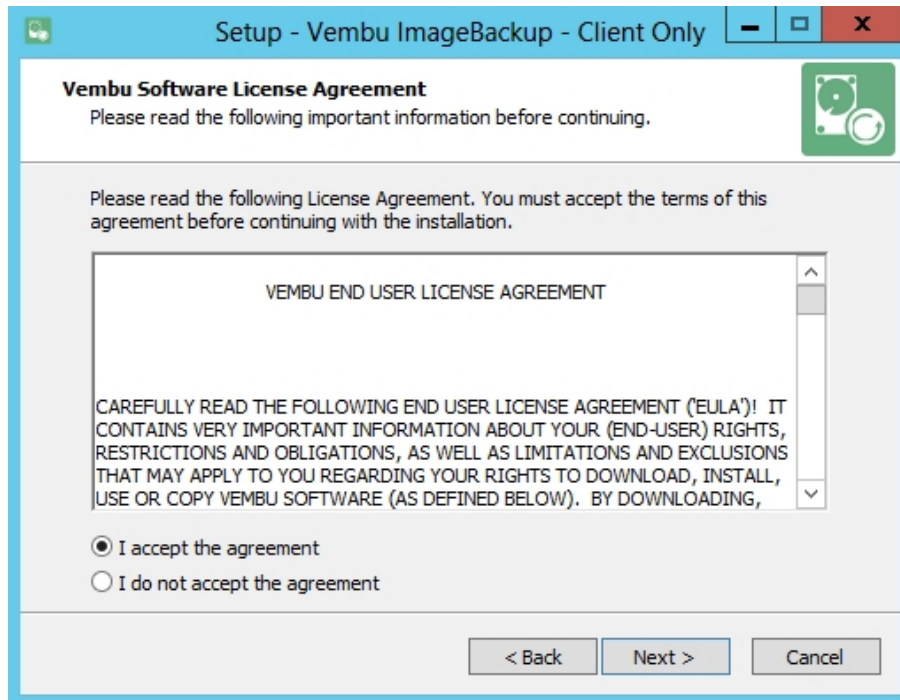
Vembu ImageBackup Installation Guide

Follow the steps given below to install Vembu ImageBackup:

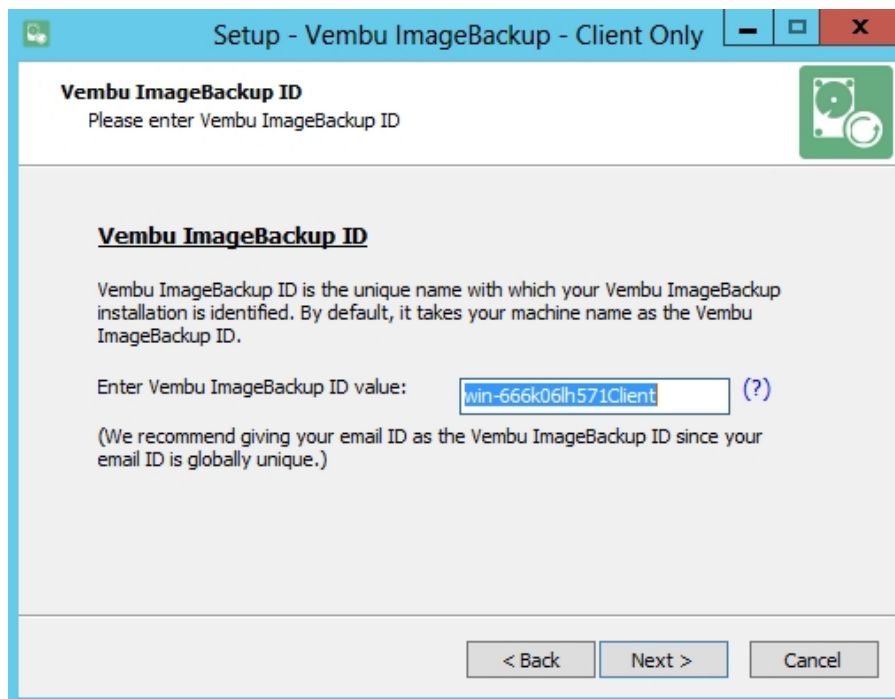
- Go to [Downloads](#) and choose the tab 'Vembu ImageBackup'.
- Download the Windows Client installer.
- Run the downloaded installer and click next on the Welcome window.



- Read and agree to Vembu Software license agreement and click Next.



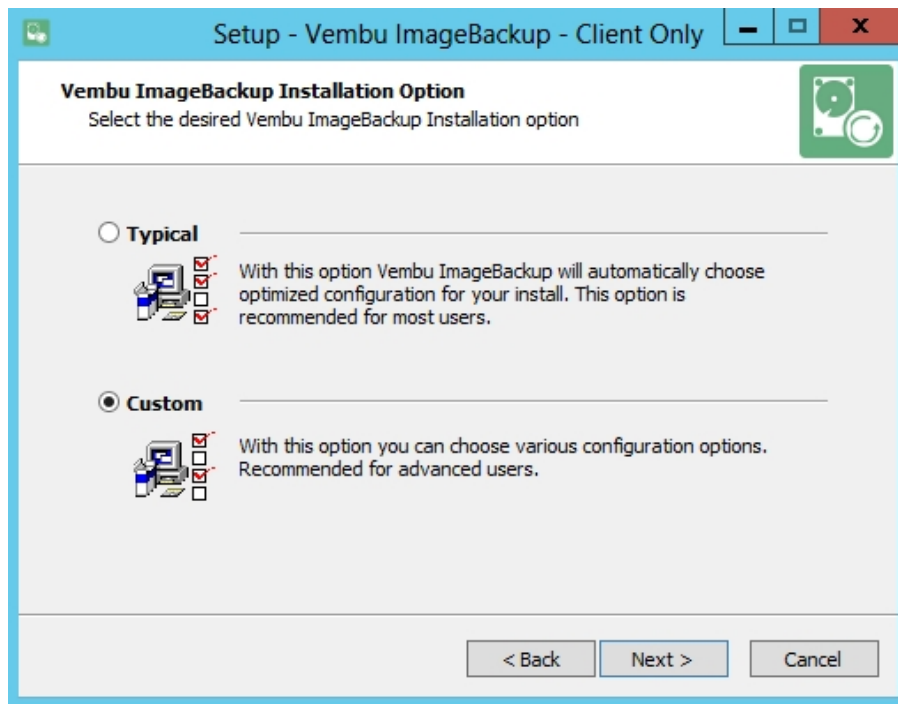
- The installation wizard will ask to enter Vembu ImageBackup ID. By default it will be your system name but it is recommended that you give your email ID, since it is globally unique. Click next.



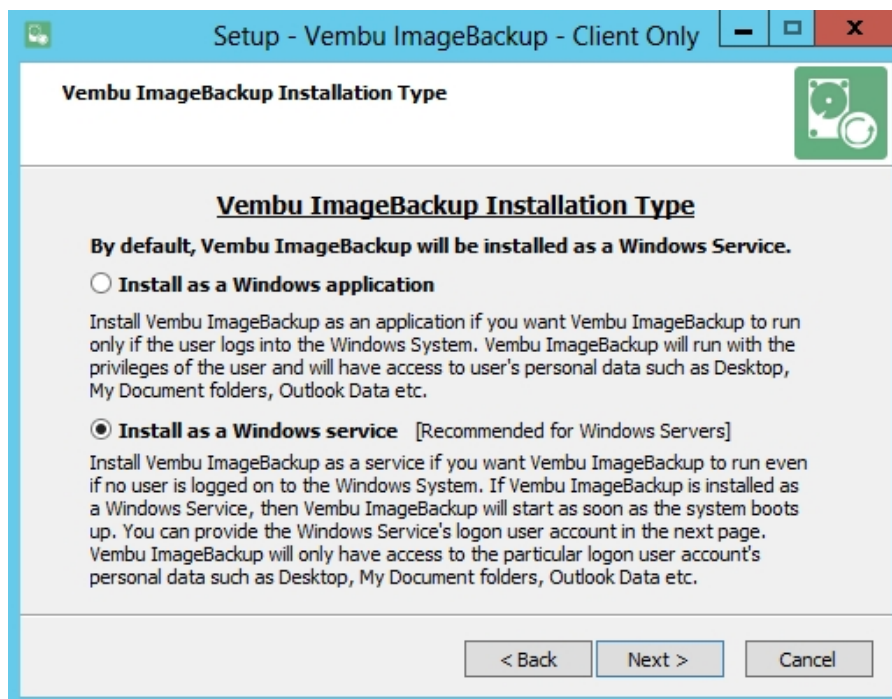
- Choose the installation option you want to proceed with.
- Opting for Typical will automatically choose an optimized configuration for your install. Proceed with Custom if you want to change the default values. Click on next when done.

Note: It is recommended to choose custom installation.



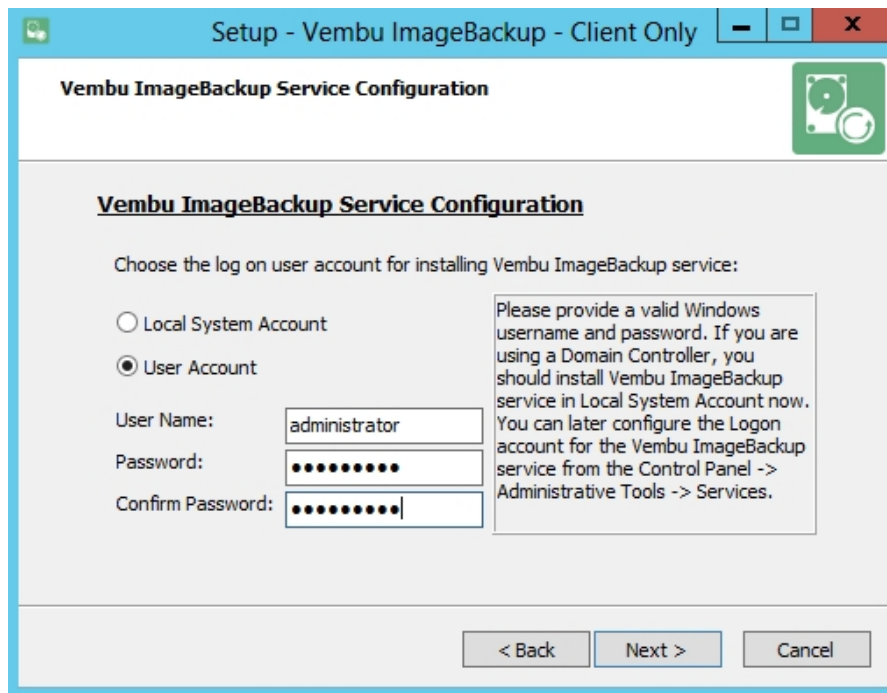


- Proceeding with custom installation, will lead to choose installation type. This will allow you to install Vembu ImageBackup:
 - As a Windows application
 - As a Windows service
- By default, install as a Windows service will be selected.

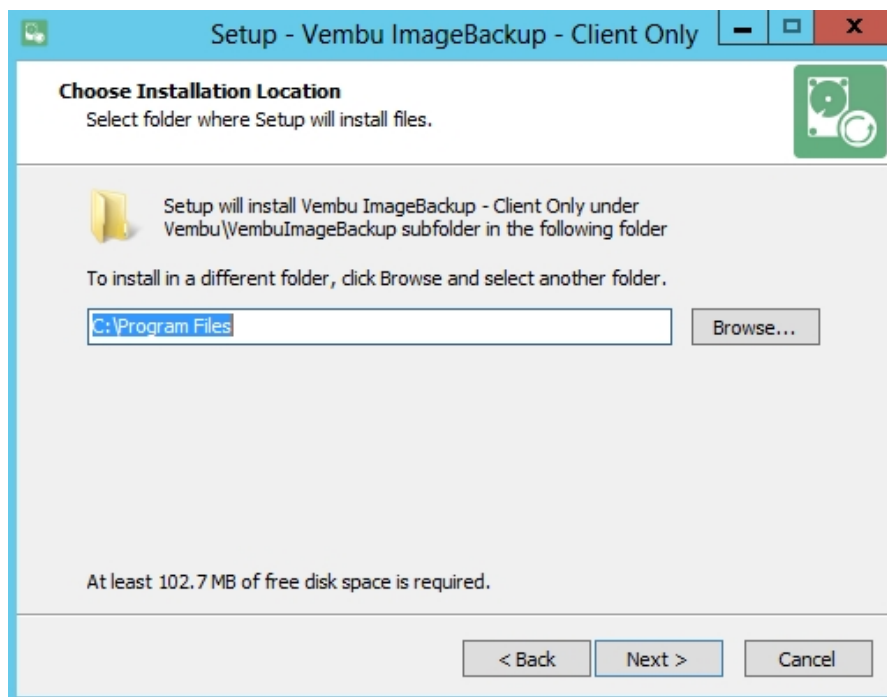


- Proceeding Next will let user configure log on account for Windows service. You can either:
 - Log-on in Local system account or
 - Log-on as a specific user (usually a user with administrator privileges).

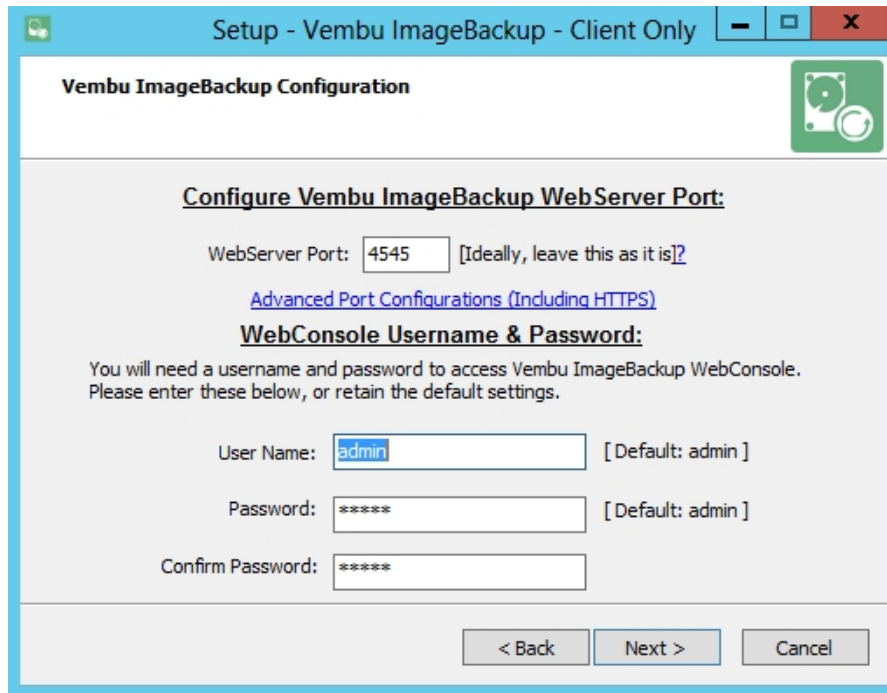




- Proceed to choose installation location. Which is by default, set as '<OS installed drive> \Program files'.



- Proceed to provide the login credentials for Webconsole access which by default set as user name: 'admin' and password: 'admin'. User can also modify webserver port, but it is recommended to leave it with the default choice unless the port is assigned for some other process already.



Setup - Vembu ImageBackup - Client Only

Vembu ImageBackup Configuration

Configure Vembu ImageBackup WebServer Port:

WebServer Port: [Ideally, leave this as it is?]

[Advanced Port Configurations \(Including HTTPS\)](#)

WebConsole Username & Password:

You will need a username and password to access Vembu ImageBackup WebConsole. Please enter these below, or retain the default settings.

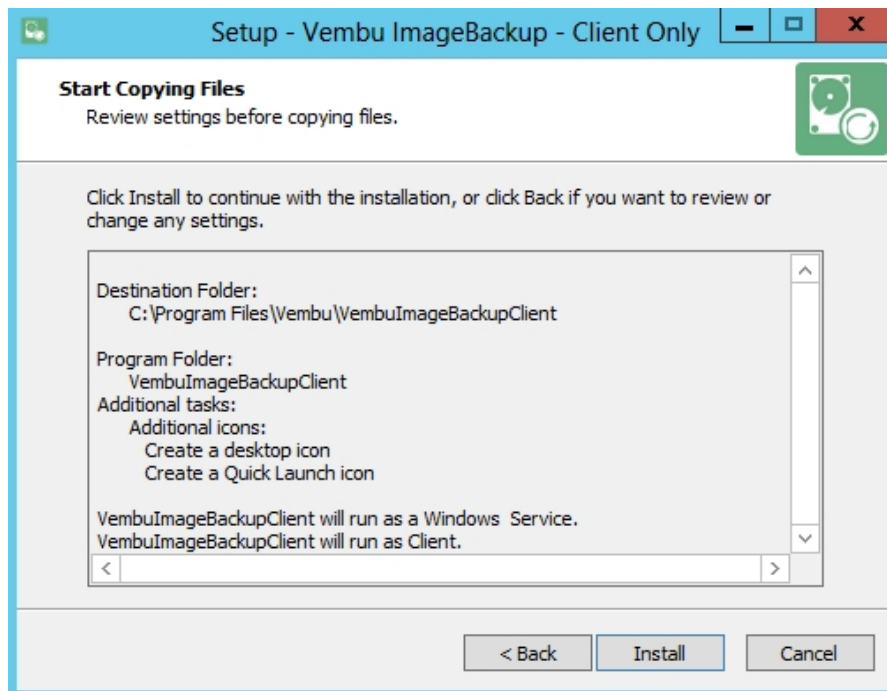
User Name: [Default: admin]

Password: [Default: admin]

Confirm Password:

< Back Next > Cancel

- Proceed to choose Program folder and then choose shortcut icons if required. Once done choosing all, verify the details provided in final window shown and proceed with installation.



Setup - Vembu ImageBackup - Client Only

Start Copying Files

Review settings before copying files.

Click Install to continue with the installation, or click Back if you want to review or change any settings.

Destination Folder:
C:\Program Files\Vembu\VembuImageBackupClient

Program Folder:
VembuImageBackupClient

Additional tasks:
Create a desktop icon
Create a Quick Launch icon

VembuImageBackupClient will run as a Windows Service.
VembuImageBackupClient will run as Client.

< Install Cancel